



ARGYLL AND BUTE COUNCIL SECONDARY SCHOOL ATTAINMENT REPORT  
AREA COMMITTEE



CAMPBELTOWN GRAMMAR SCHOOL

JUNE 2023

Campbeltown Grammar School was founded in 1686. It serves the town of Campbeltown, the south Kintyre area and the island of Gigha and has a roll of 360. The new school opened in February 2018 and is very much built for education in the 21st Century. State of the art classrooms all have Promethean Boards that teachers are using effectively to help make their lessons engaging and motivating. The sports facilities are excellent and comprise of a large games hall, 1 smaller gymnasium with a climbing wall and an all-weather pitch, serviced by floodlights. Campbeltown Grammar is very much a community school, acting as a focus for many of the area's cultural, social and sporting activities and providing logistical and material support for many community activities. A wide range of extra-curricular activities is offered, including drama, art, choir, cookery and homework clubs. A wide range of sports is available, including football, volleyball, badminton, cricket and shinty. Positive relationships between staff, pupils and parents and a supportive Parent Council are particular features of the school.

### S3 ACEL Attainment in Literacy and Numeracy

School	Level	% Achieved				
		Reading	Writing	L&T	Literacy	Numeracy
Campbeltown Grammar School	<b>Third Level or better</b>	85.0	85.0	88.3	85.0	80.0
Argyll & Bute	<b>Third Level or better</b>	88.3	87.0	88.2	83.9	87.8
Campbeltown Grammar School	<b>Fourth Level</b>	36.7	38.3	36.7	31.7	55.0
Argyll & Bute	<b>Fourth Level</b>	49.8	47.6	51.5	45.9	57.6

### S3 ACEL – Gaelic (if relevant)

School	Level	% Achieved				
		Gaelic Reading	Gaelic Writing	Gaelic L&T		
	<b>Third Level or better</b>	na	na	Na		
	<b>Fourth Level</b>	na	na	na		

**Evaluative Comment – Areas of Strength in BGE Attainment:**

In listening and talking we are above of the Argyll and Bute average at level 3 and working on improving this at fourth level.

Young people achieving level 3 literacy is higher than Argyll and Bute average

**Evaluative Comment – Areas for Development in BGE Attainment:**

We have introduced more fourth level experiences into our BGE courses to raise the percentage achieving at fourth level by the end of S3.

We are working closely with both the PT English and PT Maths to address this issue.

Links with Cluster primary schools have been developed further

We have appointed a teacher of BGE Literacy, Numeracy and BGE transition to help support improvement.

## National Qualifications – Pass rates

NATIONAL QUALIFICATIONS	2021-22 A-C				
	Number of Presentations	Number Attaining A-C	% Attaining A-C	Argyll and Bute % Attaining A-C	National % Attaining A-C
Advanced Higher	26	20	76.92%	85.50%	82.60%
Higher	185	135	72.97%	80.90%	80.30%
National 5	323	229	70.90%	79.70%	81.60%

Level/Stage 2022	A	B	C	D	No Award	Grade A-B	Grade A-C	Grade A-D
<b>National 5</b>	(Nat. 41.20% A&B 35.40%)	(Nat. 23.00% A&B 25.57%)	(Nat. 17.43% A&B 18.69%)	(Nat. 10.79% A&B 12.73%)	(Nat. 7.60% A&B 7.60%)	(Nat. 64.20% A&B 61%)	(Nat. 81.60% A&B 79.70%)	(Nat. 92.4% A&B 92.4%)
S4	26.98%	23.72%	20.93%	16.28%	12.09%	50.70%	<b>71.63%</b>	87.91%
S5	25.71%	24.29%	22.86%	17.14%	10.00%	50.00%	<b>72.86%</b>	90.00%
S6	21.05%	18.42%	23.68%	21.05%	15.79%	39.47%	<b>63.16%</b>	84.21%
<b>Higher</b>	(Nat. 36.50% A&B 35.60%)	(Nat. 24.32% A&B 24.56%)	(Nat. 19.49% A&B 20.8%)	(Nat. 11.74% A&B 12.61%)	(Nat. 7.90% A&B 6.50%)	(Nat. 60.90% A&B 60.00%)	(Nat. 80.3% A&B 80.90%)	(Nat. 92.10% A&B 93.50%)
S4	100.00%	0.00%	0.00%	0.00%	0.00%	100.00%	<b>100.00%</b>	100.00%
S5	22.40%	24.00%	30.40%	16.80%	6.40%	46.40%	<b>76.80%</b>	93.60%
S6	13.56%	28.81%	22.03%	15.25%	20.34%	42.37%	<b>64.41%</b>	79.66%

<b>Advanced Higher</b>	(Nat 35.00% A&B 30.80%)	(Nat. 26.28% A&B 26.09%)	(Nat. 21.35% A&B 28.99%)	(Nat. 11.27% A&B 11.59%)	(Nat. 6.20% A&B 3.20%)	(Nat 61.2% A&B 56.7%)	Nat. 82.60% A&B 85.50%)	(Nat. 93.80% A&B 96.8%)
S5	0.00%	0.00%	100.00%	0.00%	0.00%	0.00%	<b>100.00%</b>	100.00%
S6	20.00%	20.00%	36.00%	20.00%	4.00%	40.00%	<b>76.00%</b>	96.00%

### **Evaluative Comment – Areas of Strength**

Our staff have worked hard to develop a package of interventions to support our young people

An attainment package has been introduced in the school to support staff, parents and young people.

### **Evaluative Comment – Areas for Development**

Our S4 National 5 A-C pass rate is below Argyll and Bute and the National establishment

Our S5 Higher A-C pass rate is below Argyll and Bute and the National Establishment

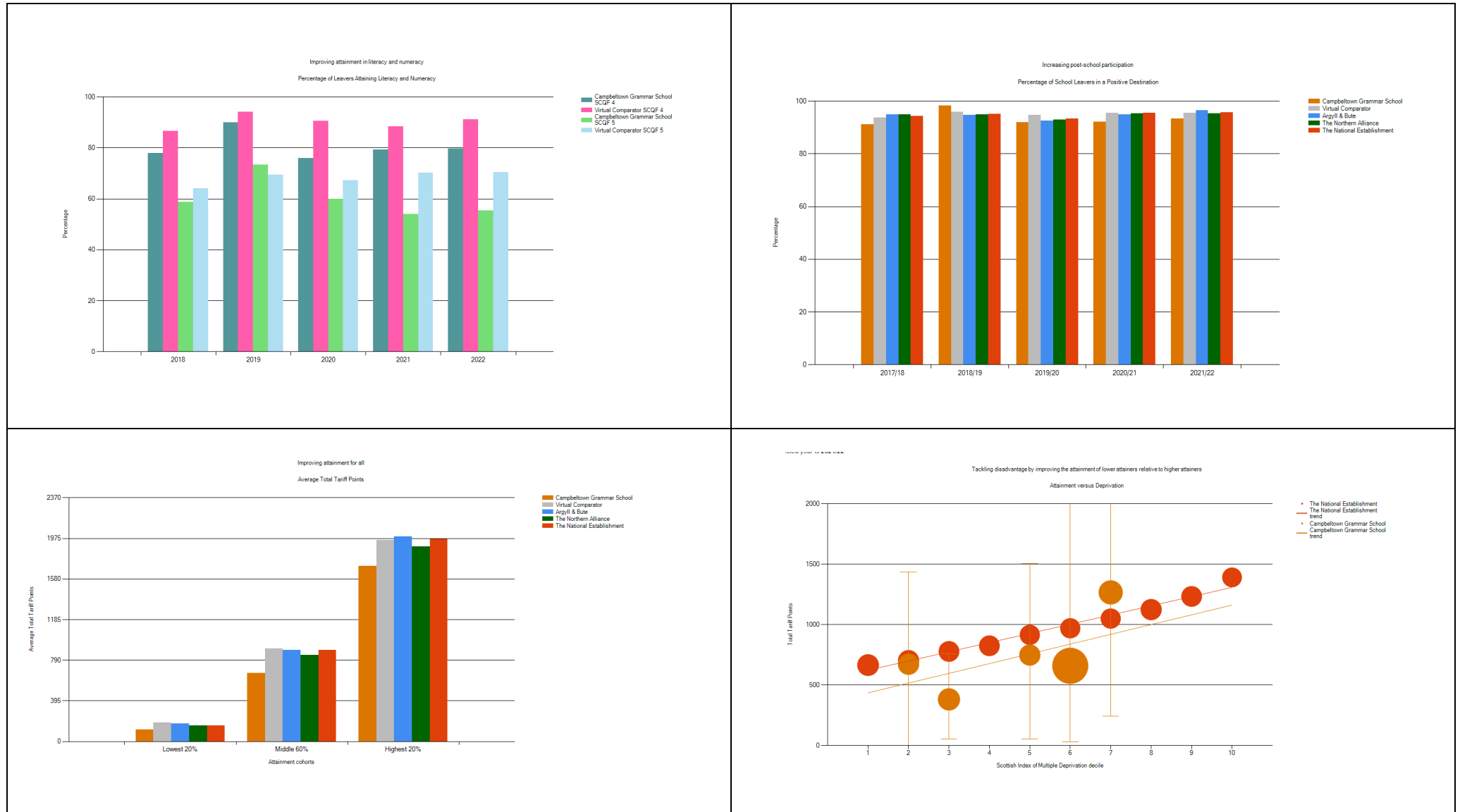
Our S6 Advanced Higher A-C pass rate is below Argyll and Bute and the National Establishment

The school must continue to further develop the attainment package introduced during session 2022-23.

# Insight Dashboard

## What is Insight Scotland?

Insight is a professional tool, aimed at teachers and other staff. It is used to help secondary schools and local authorities identify areas of success and where improvements can be made for pupils in the senior phase. The dashboard has 4 measures.



## Improving attainment in literacy and numeracy



### Evaluative Comment – Areas of Strength

Work has started to improve attainment in Literacy and Numeracy.

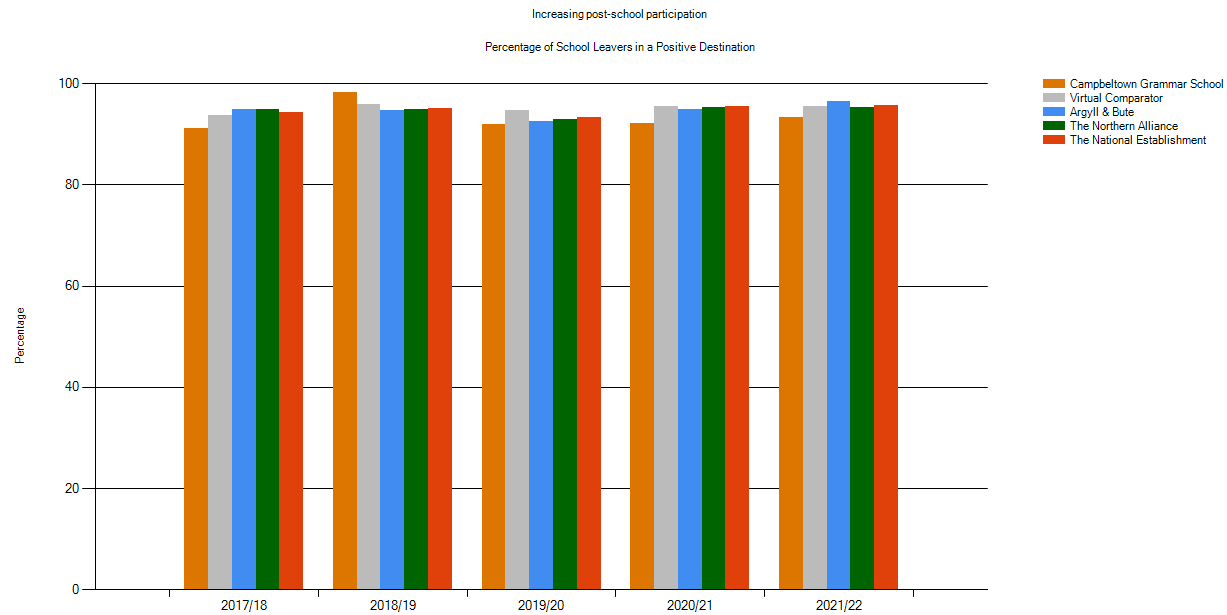
We have appointed a Teacher of Literacy, Numeracy and BGE Transition to support this improvement

### Evaluative Comment – Areas for Development

Further work is required to improve attainment in Literacy and Numeracy at both Level 3 and Level 4.



## Increased post-school participation



### Evaluative Comment – Areas of Strength

Skills are being taught in classes to help develop our young people

We have introduced more inputs on pathways when leaving school

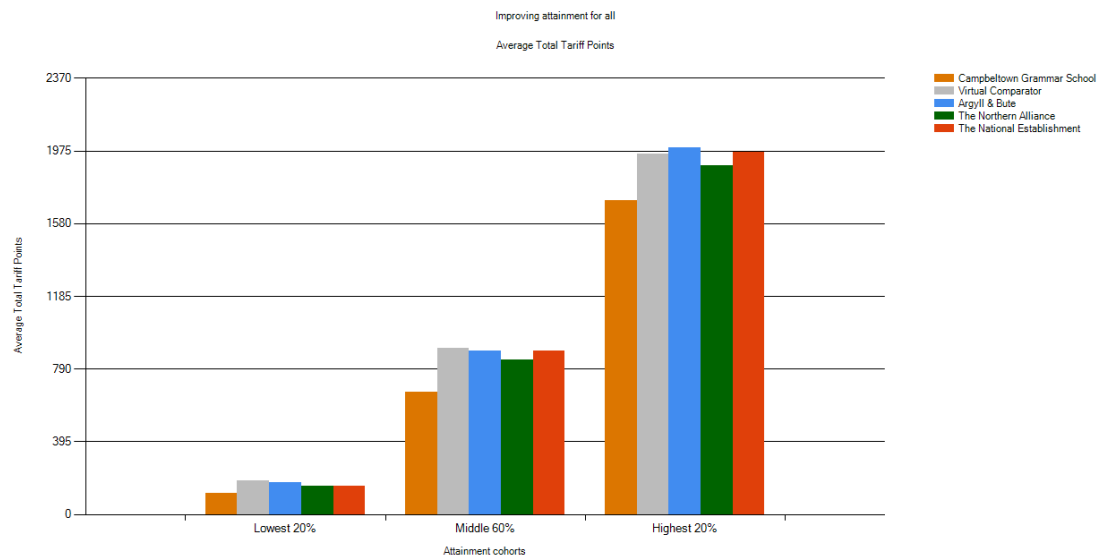
We held a partners meetings to discuss apprenticeships and other employment routes

We have increased aspirations of our young people

### Evaluative Comment – Areas for Development

Further work is required to improve our leavers' destination. Our current data is below our Virtual comparator, Argyll and Bute, The Northern Alliance and the National Establishment.

## Improving attainment for all



### Evaluative Comment – Areas of Strength

Our attainment programme introduced during session 2022-23 should improve our attainment data

New tracking and monitoring system has been introduced to allow staff to track young people's attainment and progress.

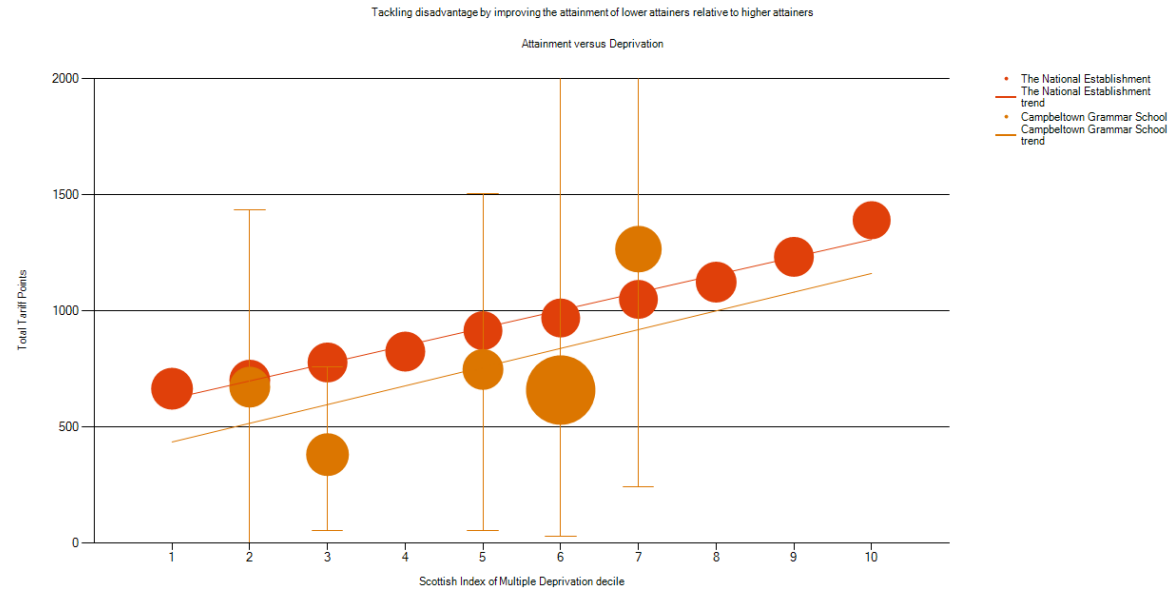
### Evaluative Comment – Areas for Development

We have further development in all three measures. We are below our virtual comparator, Argyll and Bute, The Northern Alliance and National Establishment.

Further development of the attainment package that have been introduced

Departmental reviews will be introduced during session 2023-23. This will ensure the Senior Leadership Team are aware on any subject specific issues.

## Attainment versus Deprivation



### Evaluative Comment – Areas of Strength

Young people in SIMD 2 have performed equally well as the National establishment.

Young people in SIMD 7 have performed better than the National establishment

### Evaluative Comment – Areas for Development

Young people in SIMD 3, 5 and 6 performed lower than the National Establishment

Continued work is required to improve attainment in these areas.

## Wider Achievement Qualifications

**National Certificates; Higher National Certificates; Scottish Vocational Qualifications; National Progression Awards; Skills for Work qualifications; Foundation Apprenticeships; Scottish Baccalaureate**

**Overall evaluative comment/narrative on Wider Achievement Qualifications in your school:**

**Wider achievement opportunities in our school have a large uptake**

### College

A total of 80 pupils selected an additional course. 67 of those young people gained a qualification. 4 young people failed and 9 young people withdrew from their course. Some of the withdrawals came from young people who left school and others were from young people who were not engaging in education.

SCHOOL/COLLEGE PARTNERSHIP NATIONAL QUALIFICATIONS	2021-22 A-C (including Passes)			
	Number of Presentations	Number Attaining A-C	% Attaining A-C	% of those commencing college course completing course
Higher	2	0	0%	89%
National 5	36	31	86%	
National 4	47	41	87%	
SCHOOL/COLLEGE PARTNERSHIP NATIONAL QUALIFICATIONS	2021-22 A-D (including Passes)			
	Number of Presentations	Number Attaining A-D	% Attaining A-D	% of those commencing course completing course
Higher	2	0	0	89%
National 5	36	33	91	
National 4	47	41	87	

UNGRADED COURSES	Numbers Achieving			
	SCQF 4	SCQF 5	NPA	Other Awards (please detail)
ARAAS4EE1L - Early Education & Childcare (SfW) National 4 1 Yr (Argyll)	9			
ARAAS5EECL - Early Education & Childcare (SfW) National 5 1 Yr (Argyll)		9		
ARAMS4BSKL - Beauty Skills NPA Level 4 (Argyll)	6			
ARAMS5MUSL - Make-Up Skills NPA Level 5 (Argyll)		4		
ARCF55ES1L - Engineering Skills (SfW) National 5 1 Yr (Argyll)		11		
ARCSS5SR1L - Sport and Recreation (SfW) National 5 1yr (Argyll)		7		
ARDIS4RU1L - Rural Skills (SfW) National 4 1 Yr (Argyll)	7			
ARDOS4PCOL - National 4 Hospitality: Practical Cookery (Argyll)	8			
ARBLS6CGDL - Computer Games Development NPA at SCQF Level 6 (Argyll)				0
ARBOS6SS2L - FA Social Services & Healthcare 2 Year (Argyll)				1

The college partnership is a positive one.

Other wider achievement opportunities

12x An introduction to Leadership

12x Leadership in Practice

Health and Social Care Yass course x3

Future Learn course in Forensic Science, Beginners German and Sociology

Sports Leaders Award x 30

2 Holocaust Ambassadors

6 Springbank internship

Personal safety delivered to S5

Asdan and John Muir delivered to S3

**Equity and Attainment – Evaluation of Key Factors**

<b>Factor in attainment</b>	
Attendance	School Ave. Att. 21-22: <b>87.41%</b>
Exclusion	No. of Exclusion Incidents 21-22: <b>8</b> No. of Exclusion Openings 21-22: <b>19</b>
Additional Support Needs	New Principal Teacher of Learning and Behaviour support appointed. Increased access to mainstream classes with provision of National 1 and 2 courses in some subjects.
SIMD	Staff made aware of SIMD profile and how to support young people
Free School Meal Entitlement	Breakfast club is available to all young people Pupils can attend a soft start with HWB officer where breakfast club is also provided.
Care Experienced (and previously Care Experienced)	
English as Additional Language	

Other (give details	
---------------------	--

### **Pupil Equity Funding**

We have used our Pupil Equity Funding to appoint a wellbeing officer to support our young people.

We have introduced a wellbeing room for our young people. This is used as a “soft start” for our young people and to support their learning. Additional inputs are now delivered in the wellbeing room for targeted young people.

### **Other information**

Campbeltown Grammar School has made positive strides forward during session 2022-23. The ethos in the school is positive and our young people are motivated.

We have introduced a number of new initiatives to support our young people. Our attainment package and mentoring programme has improved motivation in our senior pupils.

The Campbeltown Brass Band continues to perform well. Many of our young people play with the band. They were named as the Scottish and British champions.

Our young people have performed well in swimming, A number of young people made the national finals and just missed out on winning a medal.

Our Art and Design department came third in a National Global Canvas Challenge. They create a giant collage around the theme of biodiversity. They produced a collage of a Blue Whale.

We have further developed our YPI programme and two of our young people will attend the National YPI conference in Perth

